

RAPID DISASTER RECOVERY; SEAMLESS BUSINESS CONTINUITY

Reduce downtime and restore your business operations quickly in the event of a crisis – with Zerto Disaster Recovery from Harbor.



Data loss is happening more and more in today's world, mainly due to human error and system outages. Additionally, the threat of cyber attacks and ransomware is fast on the increase. Enterprises everywhere are targeted by increasingly sophisticated threat actors and the rapidly changing business landscape in recent times has only intensified the issue.

Protecting an organisation's valuable data has become vital. But because succumbing to an attack is no longer an 'if', rather a 'when', customers shouldn't be focusing solely on prevention – you need to consider recovery too.

At Harbor Solutions, we're here to protect customers' critical workloads by harnessing our Zerto Disaster Recovery service – and provide customers with the ability to continuously replicate their production workloads from VMware or Hyper-V environments to a secondary site managed by Harbor Solutions.



EFFICIENT DISASTER RECOVERY STARTS HERE

At Harbor, we start every customer engagement right from the beginning. Consequently, we begin by assessing a customer's current position as well as their business goals. And we consult with them via architectural discovery sessions to develop a strategy that works for them.

We want to provide peace of mind right from the start. Therefore, we simplify complex issues and security concerns exactly when they need addressing. We know how to reassure customers who need to get back on their feet fast following a disaster.



Hewlett Packard Enterprise company

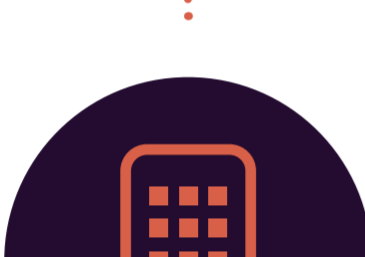
WHY ZERTO FOR DISASTER RECOVERY?

An effective disaster recovery plan reduces downtime and restores business operations quickly in the event of a crisis. Following a power outage, natural disaster, cyber-attack or other significant setback, disaster recovery services ensure data is recovered quickly, so that organisations can get back what was lost and pick up where they left off. At Harbor Solutions, we're proud to be a Zerto gold partner.

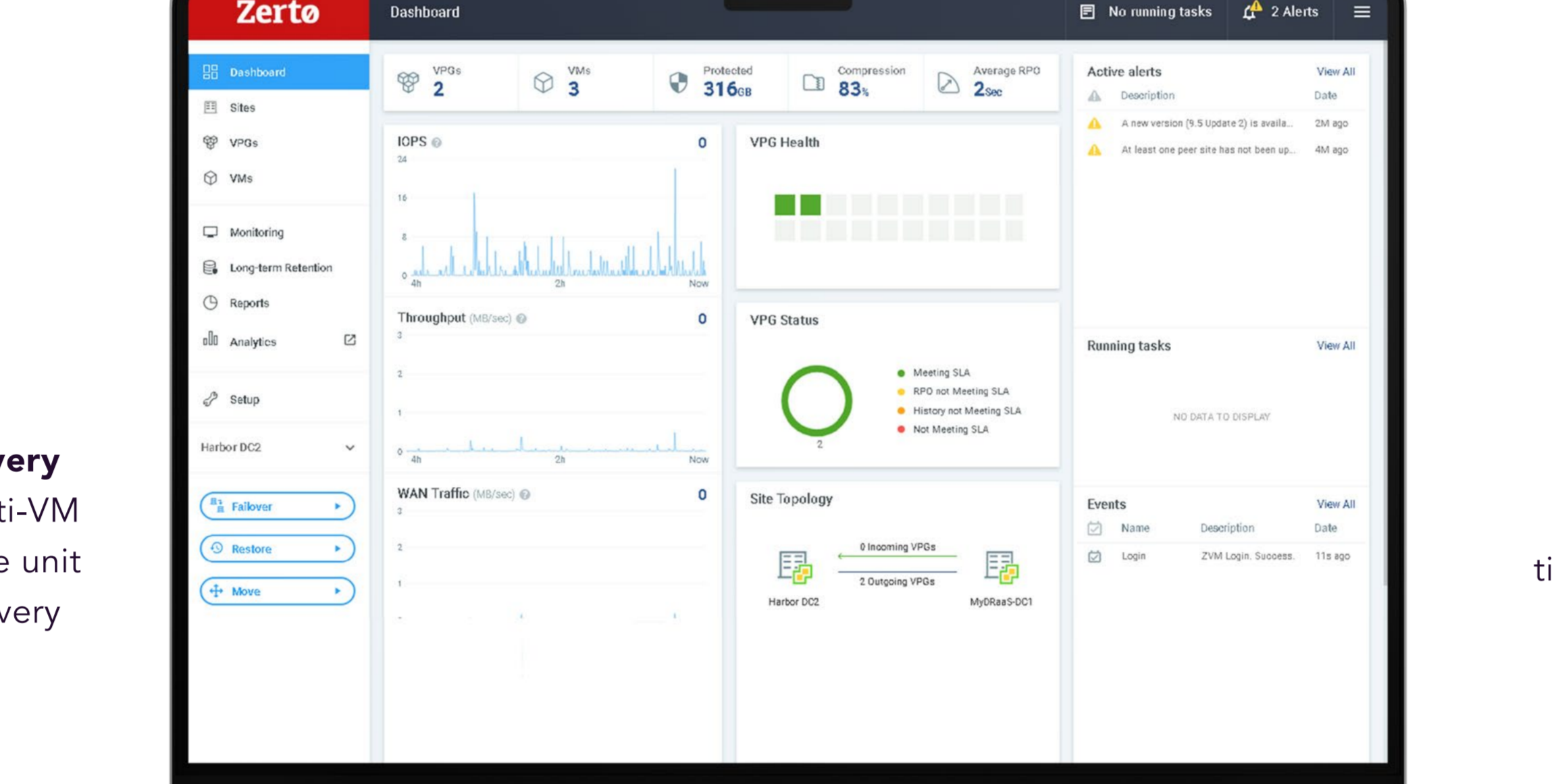
Zerto provides Continuous Data Protection (CDP), allowing customers to recover applications by restoring to any point in time with fine granularity. This always-on replication enables extremely low Recovery Point and Recovery Time Objectives, often exceeding business requirements.



Lowest RPOs and RTOs in the industry



Application-centric Recovery
allowing you to protect multi-VM applications as one cohesive unit for simple, consistent recovery



Journal-based Recovery
allowing you to point to a time right before an incident

SERVICE FOCUS:

ZERTO ENTERPRISE MANAGEMENT

We harness the power of Zerto Disaster Recovery to deliver an Enterprise Management service that protects customers' critical workloads, implementing a consistent and continuous disaster recovery process for when they need it most. Enterprise Management is for those who want to offload the installation, configuration, management and support of their own disaster recovery solution. It includes:



Hands-on deployment support
– Our experts will assist with the deployment tasks, providing recommendations and advice on best practise.



Replication monitoring and management – We monitor the status of protected items, replication and platform health, including investigation into potential issues.



Proactive problem resolution
– We comprehensively monitor solution health to recognise and resolve issues before they impact service.



Firewall management - Full management and support of DR site firewall. Covers access control and VPN connectivity configuration.



Changes and service requests
– We offer full support and management of additions and changes to configuration as requested through our service desk.



Failover support – We offer full support through both Test and Live failovers so you have the expert resource when you need it most.



Public cloud management
– If you replicate to AWS or Azure, our certified experts will manage the platform for you in-line with industry standards and best practise.



24/7/365 support – Alongside enhanced reporting, we also offer 24/7/365 unlimited access to our support team of data protection and recovery specialists.

ZERTO DISASTER RECOVERY

Zerto enables customers to continuously replicate their production workloads from VMware or Hyper-V environments to our target site. Our expert data management engineers coupled with our approach to disaster recovery guarantees fast data recovery to a particular point in time.

FEATURING:



Continuous data protection – We deliver the most aggressive RTOs and RPOs with near-synchronous replication.



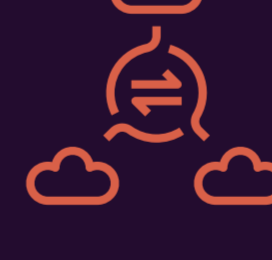
Journal-based recovery – We ensure that every change made is automatically written into a journal with a granularity of seconds.



Non-disruptive testing – Our consultants will validate recoverability or test against production replicas, and all with no production or protection impact.



Simplified fail-back processes – Our highly trained team are available to reverse replication, fail-back to the customer's environment, and help them return to business as usual with ease.



Hybrid and multi-cloud – We protect and migrate workloads to, from and between clouds, without production impact for Azure, AWS and more.

WHY HARBOR SOLUTIONS?

01

Our services are relevant for commercial and public sector organisations of all sizes, from all sectors. But rather than taking a one-size-fits-all approach, we ask the right questions to deliver the right outcomes.

05

We are one of the largest operational data protection and disaster recovery teams in Europe, supporting customers at an administration and user level, rather than just a sales level.

02

We have a wealth of experience and expertise in protecting data – no matter where it resides.

06

We offer a 24/7 platform that has financially backed SLA's – meaning around the clock operational excellence on your data, providing you complete reassurance.

03

Our approach is focused solely on the customer's needs and on delivering the right combination of flexible, scalable technologies to meet them.

07

We offer flexible commercial options across our services.

04

We help customers proactively understand the data they have, the value it holds and what needs to be done to protect it.

READY TO LEARN MORE?



Get in touch to discover how you can leverage Harbor's Zerto Disaster Recovery service to deliver continuous data protection for your critical workloads. Arrange an informative, no pressure consultation - and let's see where the conversation takes us.

Email: sales@harborsolutions.com
Tel: +44 20 4566 5005



www.harborsolutions.com